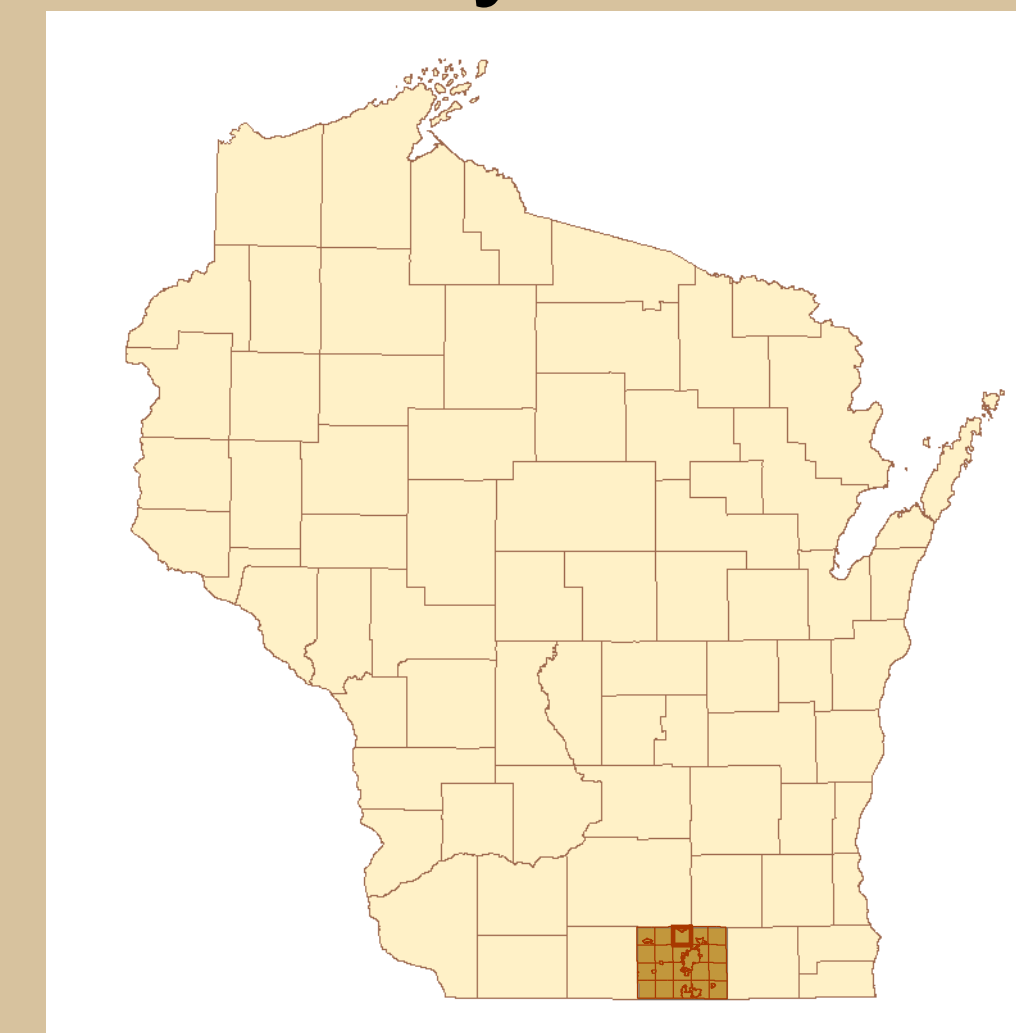
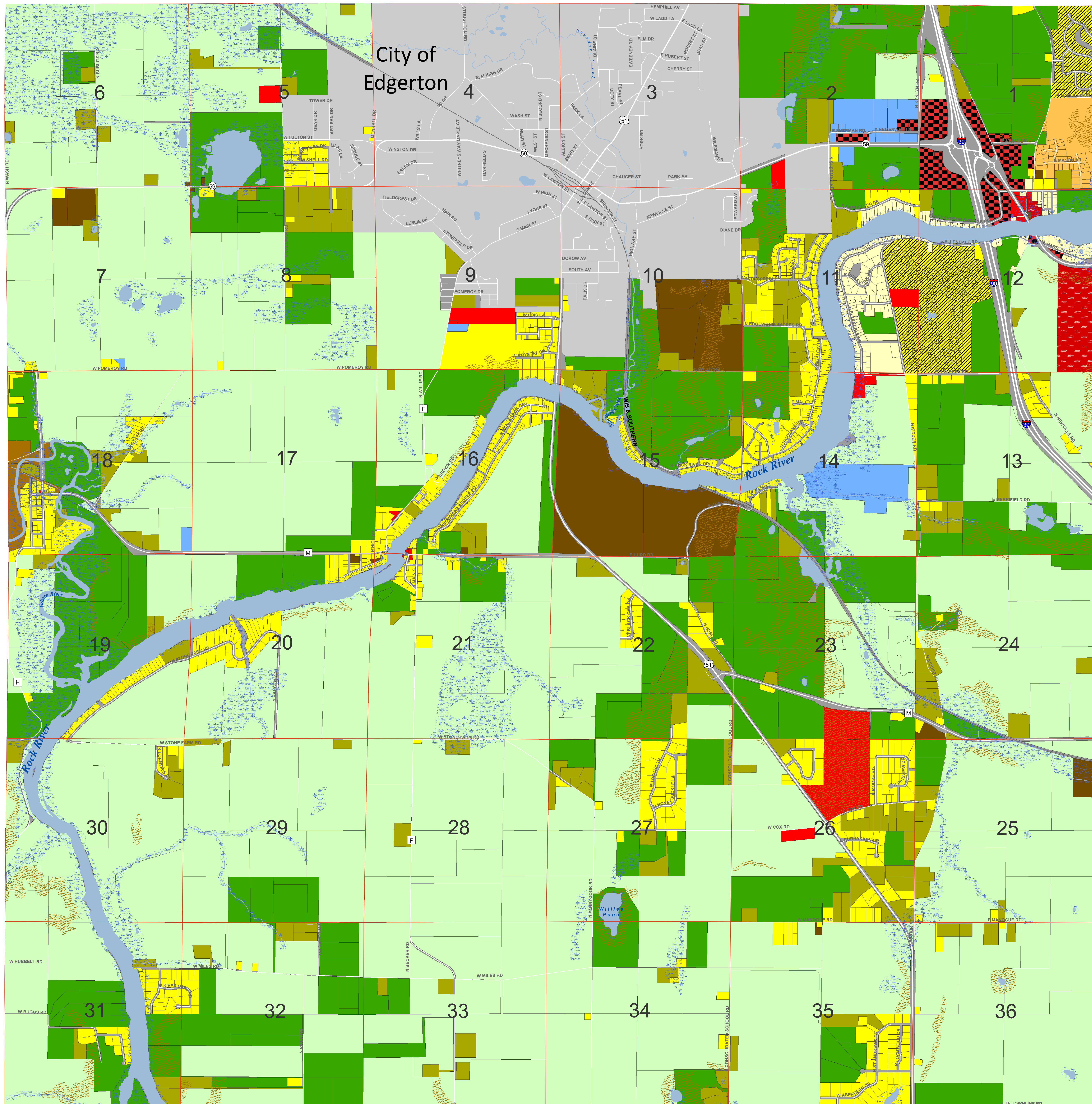


Official Zoning Map Town of Fulton County of Rock



Date Adopted: June 9, 2009
Date Modified: November 17, 2017



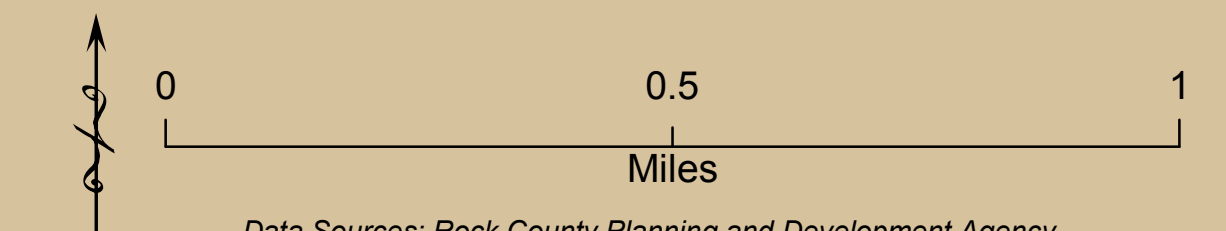
- Zoning**
- Agricultural Exclusive (A-E)
 - Agricultural General (A-G)
 - Residential-Rural Density Small (R-RS)
 - Residential - Rural Density (R-RL)
 - Residential - General Sewered (R-GS)
 - Residential-Low Density (R-L)
 - Commercial-Local (C-L)
 - Commercial-Highway Interchange (C-H)
 - Commercial-Recreational (CR)
 - Industrial-Light (I-L)
 - Planned Development (PD)
 - Natural Resource-Open Space (NR-OS)
 - Special Use
 - Dedicated, Right of Way or No Zoning Information Available
- Environmental Conservation**
- Environmental Conservation - Highland (E-H)
 - Environmental Conservation - Lowland (E-L)
- Other Features**
- Parcels
 - Section Lines
 - Cities and Villages
 - Streams and Rivers
 - Rivers and Lakes
 - Railroads
- Roads**
- Local Roads
 - County Highways
 - State Highways
 - Interstate Highways

Date Adopted 6-9-2009
Town Chairman Signature *Charles Boyle*
Town Clerk Signature *Christina...*

Revisions					
Change	Initials	Date	Change	Initials	Date
Zoning Change	SLS	4/6/2006	Zoning Change	JLB	9/3/2016
Zoning Change	SLS	4/27/2006	Zoning Change	JLB	11/23/2016
Zoning Change	SLS	3/22/2007	Zoning Change	JLB	3/23/2017
Zoning Change	SLS	5/22/2007	Zoning Change	JLB	8/2/2017
Zoning Change	SLS	7/27/2007	Zoning Change	JLB	11/17/2017
Zoning Change	SLS	2/21/2008			
Zoning Change	SLS	4/17/2008			
Zoning Change	SLS	7/18/2008			
Zoning Change	SLS	4/16/2009			
Revised Overlay District	JLB	4/27/2009			
Zoning Correction	SLS	6/21/2010			
Zoning Change	SLS	12/16/2010			
Zoning Change	SLS	5/23/2012			
Zoning Change	SLS	11/20/2012			
Zoning Correction	SLS	4/29/2013			
Zoning Change	SLS	11/14/2013			
Template Change	JLB	4/23/2014			
Zoning Correction	SLS	7/8/2014			
Zoning Change	JLB	1/26/2015			
Zoning Change	JLB	4/20/2015			
Zoning Change	JLB	6/15/2015			
Ordinance Update	JLB	6/9/2015			
Zoning Change	JLB	10/19/2015			
Zoning Change	JLB	12/10/2015			
Zoning Change	JLB	12/15/2015			
Zoning Correction	JLB	12/17/2015			
Ordinance Amendment	JLB	7/14/2016			
Zoning Change	JLB	7/14/2016			

Duplication of this map is prohibited without the written consent of the Town of Fulton. The parcel lines and zoning classifications depicted on this map represent the most up to date information available to the Rock County Planning, Economic and Community Development Agency at the time of the printing of this map. Additional information may be available by contacting the agency. This map is not intended to be a substitute for an actual field survey and is an advisory reference only.

Rock County Geographic Information Systems (GIS)
Planning, Economic and Community Development Agency
51 S Main St, Janesville, WI 53545
(TEL) 608-757-5587, (FAX) 608-757-5586
email: Planning@co.rock.wi.us



Data Sources: Rock County Planning and Development Agency