

# Official Ballot

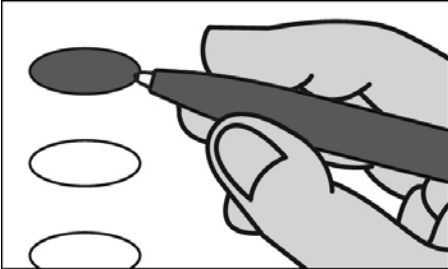
## Nonpartisan Office

### April 5, 2022

S17

**Notice to Voters:** If you are voting on Election Day, your ballot must be initialed by two (2) election inspectors. If you are voting absentee, your ballot must be initialed by the municipal clerk or deputy clerk. Your ballot may not be counted without initials (see right column of ballot for initials).

### General Instructions



If you make a mistake on your ballot or have a question, ask an election inspector for help (absentee voters: Contact your municipal clerk).

To vote for a name on the ballot, fill in the oval next to the name like this: ●

To vote for a name that is not on the ballot, write the name on the line marked "write-in" and fill in the oval next to the name like this: ●

### Judicial

**Court of Appeals Judge  
District 4  
Vote for 1**

- Brian Blanchard
- write-in

### County

**County Supervisor  
District 4  
Vote for 1**

- Connie Winter
- write-in

### Multi-Jurisdictional Judge

**City of Edgerton and  
Town of Fulton  
Municipal Judge  
Vote for 1**

- Dale Pope
- write-in

Continue voting at top of next column.

### Municipal

**Town Board Supervisor  
Vote for not more than 2**

- Randy Thompson
- Michelle J. Staff
- write-in
- write-in

### School District

**School District of Milton  
School Board Member  
Vote for not more than 2**

- Rick Mullen
- Mike Verran
- Tracy Hannah
- John Dummer
- write-in
- write-in

### Official Ballot Nonpartisan Office

April 5, 2022

for

Town of Fulton

School District of Milton

Ballot issued by

\_\_\_\_\_  
Initials of election inspectors

Absentee ballot issued by

\_\_\_\_\_  
Initials of Municipal Clerk or Deputy Clerk  
  
If issued by SVDs, both must initial.

**Certification of Voter Assistance**

I certify that I marked or read aloud this ballot at the request and direction of a voter who is authorized under Wis. Stat. §6.82 to receive assistance.

\_\_\_\_\_  
Signature of assistor

### For Official Use Only

**Inspectors:** Identify ballots required to be remade:

- Overvoted
- Damaged
- Other

If this is the **Original Ballot**, write the serial number here:

\_\_\_\_\_

If this is the **Duplicate Ballot**, write the serial number here:

\_\_\_\_\_

\_\_\_\_\_  
Initials of inspectors who remade ballot