

Official Primary Ballot

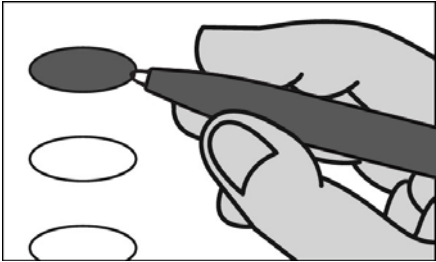
Partisan Office

August 9, 2022

S12

**Notice to Voters:** If you are voting on Election Day, your ballot must be initialed by two (2) election inspectors. If you are voting absentee, your ballot must be initialed by the municipal clerk or deputy clerk. Your ballot may not be counted without initials (see end of ballot for initials).

General Instructions



If you make a mistake on your ballot or have a question, ask an election inspector for help (absentee voters: Contact your municipal clerk).

To vote for a name on the ballot, fill in the oval next to the name like this: ●

To vote for a name that is not on the ballot, write the name on the line marked "write-in" and fill in the oval next to the name like this: ●

Special Instructions for Voting in a Partisan Primary

- In the Partisan Primary:
- You may vote in only ONE party's primary.
  - If you choose a party, votes cast in that party will be counted. Votes cast in any other party will not be counted.
  - If you do not choose a party, and you vote in more than one party, no votes will be counted.

You must vote for individual candidates.

Party Preference Section

Choose a party in which to vote

Fill in the oval next to your party choice like this: ●

Choose only ONE

- ☐ Democratic
- ☐ Republican
- ☐ Libertarian
- ☐ Constitution

Democratic Party Primary

If you vote in this party's primary, you may not vote in any other party's primary.

Statewide

Governor  
Vote for 1

- ☐ Tony Evers
- ☐ write-in

Lieutenant Governor  
Vote for 1

- ☐ Peng Her
- ☐ Sara Rodriguez
- ☐ write-in

Attorney General  
Vote for 1

- ☐ Josh Kaul
- ☐ write-in

Secretary of State  
Vote for 1

- ☐ Doug La Follette
- ☐ Alexia Sabor
- ☐ write-in

State Treasurer  
Vote for 1

- ☐ Aaron Richardson
- ☐ Angelito Tenorio
- ☐ Gillian M. Battino
- ☐ write-in

Congressional

United States Senator  
Vote for 1

- ☐ Mandela Barnes
- ☐ Alex Lasry
- ☐ Kou C. Lee
- ☐ Sarah Godlewski
- ☐ Peter Peckarsky
- ☐ Steven Olikara
- ☐ Darrell Williams
- ☐ Tom Nelson
- ☐ write-in

Representative in Congress  
District 2  
Vote for 1

- ☐ Mark Pocan
- ☐ write-in

Legislative

State Senator  
District 15  
Vote for 1

- ☐ Mark Spreitzer
- ☐ write-in

Representative to the Assembly  
District 43  
Vote for 1

- ☐ Jenna Jacobson
- ☐ Matt McIntyre
- ☐ write-in

County

Sheriff  
Vote for 1

- ☐ Troy Egger
- ☐ Curtis Fell
- ☐ write-in

Clerk of Circuit Court  
Vote for 1

- ☐ Jacki Gackstatter
- ☐ write-in



End Democratic Party Primary

Republican Party Primary

If you vote in this party's primary, you may not vote in any other party's primary.

Statewide

Governor  
Vote for 1

- ☐ Kevin Nicholson
- ☐ Rebecca Kleefisch
- ☐ Timothy Ramthun
- ☐ Adam J. Fischer
- ☐ Tim Michels
- ☐ write-in

Lieutenant Governor  
Vote for 1

- ☐ Patrick Testin
- ☐ Will Martin
- ☐ Kyle Yudes
- ☐ Roger Roth
- ☐ David C. Varnam
- ☐ Cindy Werner
- ☐ David D. King
- ☐ Jonathan Wichmann
- ☐ write-in

Attorney General  
Vote for 1

- ☐ Eric Toney
- ☐ Karen Mueller
- ☐ Adam Jarchow
- ☐ write-in

Secretary of State  
Vote for 1

- ☐ Amy Lynn Loudenbeck
- ☐ Jay Schroeder
- ☐ Justin D. Schmidtka
- ☐ write-in

State Treasurer  
Vote for 1

- ☐ John S. Leiber
- ☐ Orlando Owens
- ☐ write-in

Congressional

United States Senator  
Vote for 1

- ☐ Ron Johnson
- ☐ David Schroeder
- ☐ write-in

Representative in Congress  
District 2  
Vote for 1

- ☐ Charity Barry
- ☐ Erik Olsen
- ☐ write-in

Legislative

State Senator  
District 15  
Vote for 1

- ☐ Mark Trofimchuck
- ☐ write-in

Representative to the Assembly  
District 43  
Vote for 1

- ☐ Marisa Voelkel
- ☐ write-in

County

Sheriff  
Vote for 1


- ☐ write-in


Clerk of Circuit Court  
Vote for 1

- ☐ write-in



End Republican Party Primary

Libertarian Party Primary
<i>If you vote in this party's primary, you may not vote in any other party's primary.</i>
Statewide
Governor Vote for 1
<input type="radio"/> write-in
Lieutenant Governor Vote for 1
<input type="radio"/> write-in
Attorney General Vote for 1
<input type="radio"/> write-in
Secretary of State Vote for 1
<input type="radio"/> Neil Harmon
<input type="radio"/> write-in
State Treasurer Vote for 1
<input type="radio"/> write-in
Congressional
United States Senator Vote for 1
<input type="radio"/> write-in
Representative in Congress District 2 Vote for 1
<input type="radio"/> write-in
Legislative
State Senator District 15 Vote for 1
<input type="radio"/> write-in
Representative to the Assembly District 43 Vote for 1
<input type="radio"/> write-in
County
Sheriff Vote for 1
<input type="radio"/> write-in
Clerk of Circuit Court Vote for 1
<input type="radio"/> write-in
 End Libertarian Party Primary

Constitution Party Primary
<i>If you vote in this party's primary, you may not vote in any other party's primary.</i>
Statewide
Governor Vote for 1
<input type="radio"/> write-in
Lieutenant Governor Vote for 1
<input type="radio"/> write-in
Attorney General Vote for 1
<input type="radio"/> write-in
Secretary of State Vote for 1
<input type="radio"/> write-in
State Treasurer Vote for 1
<input type="radio"/> Andrew Zuelke
<input type="radio"/> write-in
Congressional
United States Senator Vote for 1
<input type="radio"/> write-in
Representative in Congress District 2 Vote for 1
<input type="radio"/> write-in
Legislative
State Senator District 15 Vote for 1
<input type="radio"/> write-in
Representative to the Assembly District 43 Vote for 1
<input type="radio"/> write-in
County
Sheriff Vote for 1
<input type="radio"/> write-in
Clerk of Circuit Court Vote for 1
<input type="radio"/> write-in
 End Constitution Party Primary

<div>Official Primary Ballot</div> <div>Partisan Office</div> <div>August 9, 2022</div> <div>for</div> <div>Town of Fulton</div>	
<div>Ballot issued by</div> <div></div> <div>Initials of election inspectors</div>	
<div>Absentee ballot issued by</div> <div>Initials of Municipal Clerk or Deputy Clerk</div> <div>If issued by SVDs, both must initial</div>	
<div>Certification of Voter Assistance</div> <div>I certify that I marked or read aloud this ballot at the request and direction of a voter who is authorized under Wis. Stat. §6.82 to receive assistance.</div> <div>Signature of assistor</div>	
<div>For Official Use Only</div>	
<div>Inspectors: Identify ballots required to be remade:</div> <div><div><input type="checkbox"/> Overvoted</div><div><input type="checkbox"/> Damaged</div><div><input type="checkbox"/> Other</div></div>	
<div>If this is the <b>Original Ballot</b>, write the serial number here:</div> <div></div>	<div>If this is the <b>Duplicate Ballot</b>, write the serial number here:</div> <div></div>
<div>Initials of inspectors who remade ballot</div>	