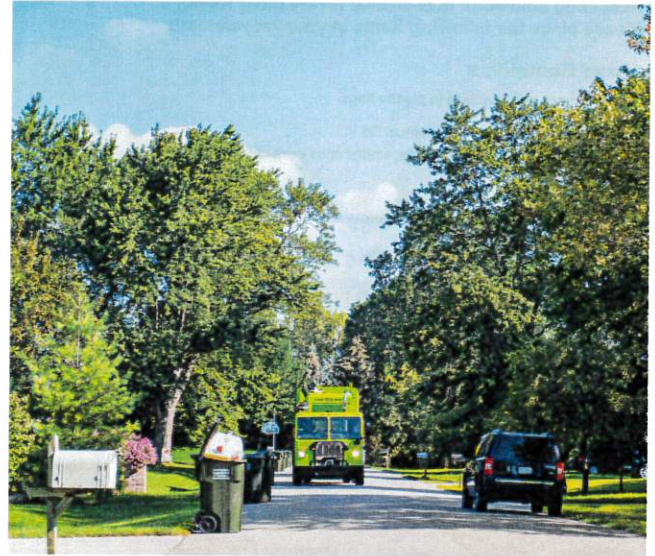




### Cart Placement

- The arrows on the lid of the cart must point to the street
- Handles and wheels should face away from the street
- The garbage cart should be placed within 2 ft. of the street on one side of the driveway
- The recycle cart should be placed within 2 ft. of the street on the other side of the driveway
- Please keep 3 ft. of clearance between the carts and other objects, especially mailboxes and vehicles



## Town of Fulton Trash and Recycling Collection Services

### Reduce, Reuse, Recycle

- Reduce paper waste by using both sides of the paper and using scrap paper whenever possible
- When shopping, reuse canvas, paper or plastic bags to bring home purchases
- Recycle as much waste as you can by following the guidelines on the next page

Garbage collection is every week. Please place the following items in your trash cart:

- Mixed trash
- Bagged garbage/ food waste
- Ceramics
- Styrofoam and other loose trash



304 W Sunny Lane  
Janesville, WI 53546  
800.248.2373

Green Today. Green For Life. | [gflenv.com](http://gflenv.com)



304 W Sunny Lane  
Janesville, WI 53546  
800.248.2373

Green Today. Green For Life. | [gflenv.com](http://gflenv.com)

Recycling collection is bi-weekly (every other week). Please place the following items in your recycle cart:

**Mixed Containers**

Please do not put recycling in plastic bags.

- Aluminum cans and clean aluminum foil
- Tin cans, steel cans, aerosol cans, empty/ dried paint cans
- Glass bottles and jars
- #1, #2, and #5 type plastics
- Milk cartons, juice boxes, soup cartons

**Mixed Paper**

**PLEASE DO NOT PUT RECYCLING IN PLASTIC BAGS.**

- Newspaper, magazines, books, mail, school/ office paper
- Brown corrugated cardboard
- Gray chipboard (cereal and shoe boxes)
- Brown paper bags

**DO NOT put the following items in the recycle cart:**



- Plastic bags
- Styrofoam of any kind
- Trash
- Construction material
- Clothing
- Yard waste
- Household hazardous waste
- Electronics
- Shredded paper (loose or bagged)

Local clean sweep programs may offer alternative options for disposal of fluorescent light bulbs, household hazardous waste, pharmaceuticals, and electronics.



10% post-consumer recycled paper

**TOWN OF FULTON  
TRASH AND RECYCLING COLLECTION CALENDAR**

**EFFECTIVE THE WEEK OF JULY 17,  
COLLECTION IN FULTON WILL BE TUESDAY**

**2023**

TRASH ONLY TRASH AND RECYCLING HOLIDAY/DELAY

**July**  
Bulk Day: 5th & 7th

S	M	T	W	T	F	S
						1
2	3	4	5	6	7	8
9	10	11	12	13	14	15
16	17	18	19	20	21	22
23	24	25	26	27	28	29
30	31					

**October**  
Bulk Day: 10/3

S	M	T	W	T	F	S
1	2	3	4	5	6	7
8	9	10	11	12	13	14
15	16	17	18	19	20	21
22	23	24	25	26	27	28
29	30	31				

**August**  
Bulk Day: 8/8

S	M	T	W	T	F	S
		1	2	3	4	5
6	7	8	9	10	11	12
13	14	15	16	17	18	19
20	21	22	23	24	25	26
27	28	29	30	31		

**November**  
Bulk Day: 11/7

S	M	T	W	T	F	S
			1	2	3	4
5	6	7	8	9	10	11
12	13	14	15	16	17	18
19	20	21	22	23	24	25
26	27	28	29	30		

**September**  
Bulk Day: 9/6

S	M	T	W	T	F	S
						1 2
3	4	5	6	7	8	9
10	11	12	13	14	15	16
17	18	19	20	21	22	23
24	25	26	27	28	29	30

**December**  
Bulk Day: 12/5

S	M	T	W	T	F	S
						1 2
3	4	5	6	7	8	9
10	11	12	13	14	15	16
17	18	19	20	21	22	23
24	25	26	27	28	29	30
31						

Please have bins out curbside the night prior to your scheduled collection day. If not possible, bins MUST be placed at curbside no later than 6 AM or they may not be picked up.

For cart repair or to report missed pick-ups, please contact GFL directly.

**800-248-2373**