

Official Ballot

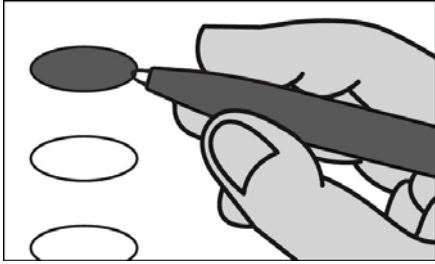
Partisan Office and Referendum

November 5, 2024

S11

Notice to Voters: If you are voting on Election Day, your ballot must be initialed by two (2) election inspectors. If you are voting absentee, your ballot must be initialed by the municipal clerk or deputy clerk. Your ballot may not be counted without initials (see end of ballot for initials).

General Instructions



If you make a mistake on your ballot or have a question, ask an election inspector for help (absentee voters: contact your municipal clerk).

To vote for a name on the ballot, fill in the oval next to the name like this: ●

To vote for a name that is not on the ballot, write the name on the line marked "write-in" and fill in the oval next to the name like this: ●

Federal

When voting for President and Vice President, you have one of two choices:

- Vote for candidates on one ticket, or
- Write in names of person on both write-in lines

A write-in vote for only a vice presidential candidate **will not be counted**.

President / Vice President Vote for 1

- Kamala D. Harris / Tim Walz (Democratic)
- Donald J. Trump / JD Vance (Republican)
- Randall Terry / Stephen Broden (Constitution)
- Chase Russell Oliver / Mike ter Maat (Libertarian)
- Jill Stein / Rudolph Ware (Wisconsin Green)
- Claudia De la Cruz / Karina Garcia (Party for Socialism and Liberation)
- Cornel West / Melina Abdullah (Justice for All)
- Robert F. Kennedy, Jr. / Nicole Shanahan (We the People)

write-in (President)

write-in (Vice President)

Continue voting at top of next column.

Congressional

United States Senator Vote for 1

- Tammy Baldwin (Democratic)
- Eric Hovde (Republican)
- Phil Anderson (Disrupt the Corruption)
- Thomas Leager (America First)
- write-in:

Representative in Congress District 2 Vote for 1

- Mark Pocan (Democratic)
- Erik Olsen (Republican)
- write-in:

Legislative and State

Representative to the Assembly District 43 Vote for 1

- Brienne Brown (Democratic)
- Scott L. Johnson (Republican)
- write-in:

District Attorney Vote for 1

- Jason D. Sanders (Democratic)
- write-in:

County

County Clerk Vote for 1

- Lisa Tollefson (Democratic)
- write-in:

County Treasurer Vote for 1

- Michelle L. Roettger (Democratic)
- write-in:

Continue voting at top of next column.

County (cont.)

Register of Deeds Vote for 1

- Sandy Disrud (Democratic)
- write-in:

Referendum

To vote in favor of the question, fill in the oval next to "Yes," like this: ●

To vote against the question, fill in the oval next to "No," like this: ●

State

QUESTION: "Eligibility to vote. Shall section 1 of article III of the constitution, which deals with suffrage, be amended to provide that only a United States citizen age 18 or older who resides in an election district may vote in an election for national, state, or local office or at a statewide or local referendum?"

- Yes
- No

School District of Milton

Question: "Shall the School District of Milton, Rock and Jefferson Counties, Wisconsin be authorized to exceed the revenue limit specified in Section 121.91, Wisconsin Statutes, by \$5,000,000 beginning with the 2026-2027 school year, for recurring purposes consisting of ongoing educational programming and staffing?"

- Yes
- No

SAMPLE

S11

Official Ballot
Partisan Office and Referendum
November 5, 2024
for

Town of
Fulton

School District of Milton

Ballot issued by

Initials of election inspectors

Absentee ballot issued by

Initials of Municipal Clerk or Deputy Clerk

If issued by SVDs, both must initial.

Certification of Voter Assistance

I certify that I marked or read aloud this ballot at the request and direction of a voter who is authorized under Wis. Stat. §6.82 to receive assistance.

Signature of assistor

For Official Use Only

Inspectors: Identify ballots required to be remade:

- Overvoted
- Damaged
- Other

If this is the **Original Ballot**, write the serial number here:

If this is the **Duplicate Ballot**, write the serial number here:

Initials of inspectors who remade ballot

